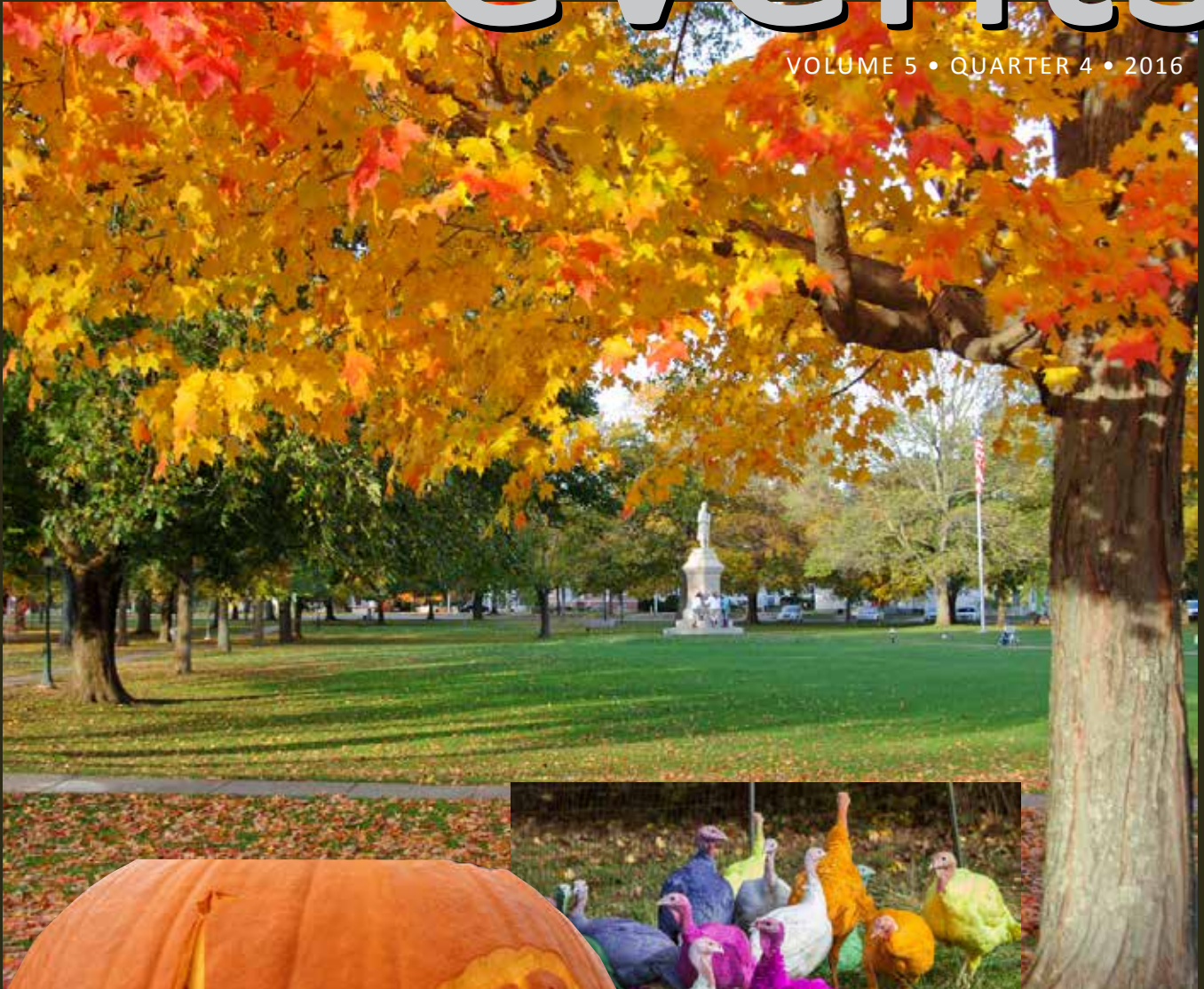


Guilford events

VOLUME 5 • QUARTER 4 • 2016



DELIVERING TOWN NEWS



TO EVERYONE IN TOWN

NOT FEELING LIKE YOURSELF?

QUICK, CONVENIENT, FRIENDLY, EXPERT CARE



We're here for you
when you need help with:

- Sore throat/cold/cough
- Pink eye
- Earache
- Sinus pain
- Flu-like symptoms
- Sprains and strains
- Minor burns/cuts/bruises
(and suture removal)
- Rashes
- Minor sports injuries
- Broken bones
- And more

NO APPOINTMENT NEEDED!



MADISON

146 Samson Rock Drive, Madison, CT
203-779-5207



OLD SAYBROOK

1687 Boston Post Road, Old Saybrook, CT
860-661-5976



MIDDLETOWN

896 Washington Street, Middletown, CT
860-788-3632

Learn more at: mhurgentcare.com

HOURS AT ALL THREE LOCATIONS

Mon. – Fri. 8:00 a.m. – 8:00 p.m.

Sat. – Sun. 8:00 a.m. – 4:30 p.m.



MIDDLESEX HOSPITAL
URGENT CARE

WALK-IN MEDICAL CENTER

First Selectman's Corner

I am happy to report that the Town ended fiscal year 2015-2016 with an estimated surplus of \$1.3 million.

This would increase our unassigned fund balance (rainy day fund) to approximately \$8 million. Credit should be given to our department supervisors for an excellent job in managing their budgets. This surplus can also be attributed to an unusually mild winter, increase in tax collections and economic development in town, which has generated more revenue in our building, engineering and health department fees.

In other financial news, we are delighted to report that Standard & Poor's Rating Services has reaffirmed the Town's "AAA" credit rating, which is their highest rating. This helped us achieve a low interest rate of 2.22% on our latest \$15,630,000 bond issue, which financed a portion of the new high school. This rate is lower than the 2.96% and 2.78% rates on the bonds issued in August 2014 and 2015, respectively.

Standard & Poor's credited the Town's strong management and budgetary performance, which is evident by its past seven years of continued surpluses and increasing unassigned reserves, as supporting its highest rating. The rating report mentioned economic development projects including Guilford Commons, The Residences at 66 High Street and Tractor Supply as providing additional diversity and growth to the tax base.

In early August, state and town officials gathered for a ribbon cutting ceremony on the newly renovated Whitfield/Water Street parking lot, which has been well received by our citizens and merchants. This much needed streetscape project was funded by a \$446,000 state grant obtained through the efforts of State Representative Sean Scanlon.



Joseph Mazza,
First Selectman

As of September 10, Sheila Villano our Finance Director for the past 15 years has retired. We would like to wish her a wonderful retirement and thank her for all of her years of service. We are happy to announce that Maryjane Malavasi will assume the duties of Finance Director on October 24, 2016. Ms. Malavasi is currently the Finance Director for the Town of Durham, a position she has held since 2006. From 1991 through 2006 she served as the Finance Director for the Town of East Haddam. We look forward to her having a long relationship with the Town of Guilford.

In our Police Department Lt. Robert (Skip) Robinson retired after 37 years of service. A lifelong resident, Lt. Robinson was hired in 1979 and moved up the ranks.

continued on page 2

*The finest home furnishings
you'll forever love*

the Shops at
**Saybrook
Country Barn**

Furniture & Interior Design | 2 Main St., Old Saybrook | 860.388.0891 | saybrookcountrybarn.com

The advertisement features a photograph of a well-furnished living room. In the foreground, a large, light-colored sofa with several patterned and floral pillows is visible. To the right, a matching ottoman sits on a dark wooden frame. A side table with a lamp and decorative items is also present. The background shows a window with sheer curtains and a framed picture on the wall. The text is overlaid on the image in various fonts and colors.

events

TM Ventures, LLC
dba Essex Printing & Events Magazines

18 Industrial Park Road, P.O.Box 205
Centerbrook, CT 06409

860-767-9087 Fax 860-767-0259
email: print@essexprinting.com
www.essexprinting.com

PUBLISHER

William E. McMinn

ART DIRECTOR

Kathy Alsop 860-391-4372
kathy@eventsmagazines.com

COVER EDITOR

AC Proctor 860-767-9087

LAYOUT & AD DESIGN

Lynne Hardt

SALES REPRESENTATIVES

VERNON • TOLLAND • ELLINGTON • WILLINGTON

Tom Fortin 860-299-4568
tom@eventsmagazines.com

ESSEX • WESTBROOK • CLINTON • MADISON

Ward Feirer 914-806-5500
wfeirer@gmail.com

OLD SAYBROOK • OLD LYME • EAST LYME

Betty Martelle 860-333-7117
betty@eventsmagazines.com

MONTVILLE • NEW LONDON • STONINGTON

Chris Angeli 860-391-5725
cangeli@eventsmagazines.com

BRANFORD • GUILFORD • WOODBRIDGE

Nancy Lee Salk 203-219-3282
nancy@eventsmagazines.com

**CHESTER • EAST HADDAM
EAST HAMPTON • HADDAM**

Sue Smith 860-885-9670
sue@eventsmagazines.com

Cover Collage Design by AC Proctor

Photos by

Judith L. Barbosa / The Guilford Courier

www.eventsmagazines.com

1.2 MILLION READERS
21 TOWNS EVERY QUARTER

Copyright © 2016 Events Magazines. All rights reserved. No part of this publication may be reproduced or transmitted in any form or by any means, electronic or mechanical, including photocopy, recording, or any information storage and retrieval system without written permission. Not responsible for omissions or typographical errors. All advertising material created by Essex Printing and Events Magazines is to be considered proprietary. Essex Printing and Events Magazines reserves the rights and license to all ad designs and photographic images produced by Essex Printing and Events Magazines. Reproduction rights for individual use in other publications is offered and available by purchase directly through Essex Printing and Events Magazines. Editorial appearing in this magazine is submitted by municipal agencies and other approved sources.

CONTENTS

First Selectman's Corner.....	1
Assessor's Office.....	4
Registrar of Voters	6
Guilford Senior Craft Fair	7
The Guilford Foundation	7
The Dudley Farm Museum.....	8
Economic Development Department	9
Guilford Art Center.....	10
Fall Events on the Guilford Green	12
Henry Whitfield State Museum	14
Sunglasses Now or Botox Later	18
Youth and Family Services	20
Shoreline Chamber of Commerce.....	23

FIRST SELECTMAN'S CORNER ... continued from page 1

He earned many awards and citations over his career, including the Medal of Valor. Lt. Robinson was replaced by Sergeant Bernier who was promoted to the rank of Lieutenant. Lt. Bernier has been with the department since 2003. Officer Martina Jackober, who has also been with the department since 2003, was promoted to the rank of Sergeant, filling Lt. Bernier's vacant position.

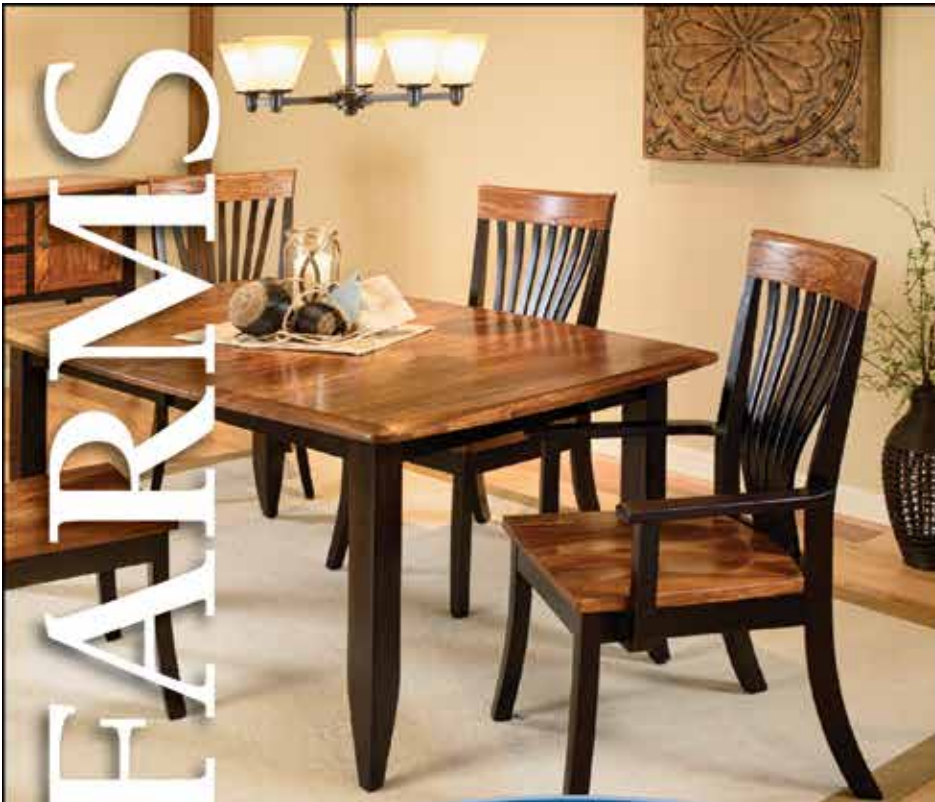
The Public Works Department has been extremely busy on its summer road maintenance and reconstruction schedule. The primary effort this year has been in North Guilford and, particularly, the Great Hill Road area. Starting in October, the department will embark upon the raising of Tuttle's Point Road, which is a major road elevation project.

The Developmental Assets for Youth (D.A.Y.) Coalition under Youth and Family Services was awarded another five-year grant from the White House Office of National Drug Control Policy. The grant award amount is \$125,000 per year for five years. After successfully completing Years 1-5 of grant funding the D.A.Y Coalition competed for and was awarded Years 6-10. The coalition has done an amazing job helping to reduce youth substance use in our community, but the work is far from over and the coalition is grateful to be able to continue this very important work.

As summer turns into fall I would like to congratulate the Parks and Recreation Department for another successful year of its summer camp program and highly successful summer concert series. We look forward to our annual fall and winter events, including the window painting, Halloween Parade, and Tree Lighting.

Joseph Mazza
First Selectman

KLOTER FARM'S



**All Furniture
15% Off!**

Solid Wood & American Made



 **american
made**

*Visit our 16-Acre Display Park &
3 Beautiful Showrooms Filled with
Handcrafted Furniture & Home Decor*

We're worth the ride!

**Columbus
Day sale**
*Sale ends
Oct. 10*

KloterFarms.com

860-871-1048

216 West Rd, Ellington, CT

FREE DELIVERY CT, MA, RI
\$1500 min. Extra charge for Cape Cod.

**Every Shed & Garage
ON SALE!**

Plus Free Delivery and 0% Financing



**Signature
Vinyl Cape**
10x12 **Sale \$3195**
12x16 **Sale \$4295**
(All Sizes On Sale)

**Signature
Vinyl Villa**
10x12 **Sale \$3495**
12x16 **Sale \$4495**
(All Sizes On Sale)



**Signature T-1-11
Dutch Garage**
14x24 **Sale \$7195**
14x30 **Sale \$8795**
14x36 **Sale \$9795**
(All Sizes On Sale)

Personal Attention, Beautiful Results

Look younger without surgery!



Botox • Voluma • Juvederm
Laser • Skin Tightening
Skin Care Products

FREE CONSULTATION

Dr. O'Malley offers a unique approach to beauty. She treats your face as her own in a discreet, caring atmosphere.



Dr. Susan O'Malley



869 Boston Post Road, Madison 203-245-2227 madisonmedspa.com

Assessor's Office

PERSONAL PROPERTY DECLARATIONS must be filed by November 1st. Penalties will be applied to non-filed declarations. Additional information is available on the Town's website and the Declaration can be found at www.ci.guilford.ct.us/town-departments/personal-property.htm.

The following is an abbreviated look at some of the exemption programs that the Assessor's Office administers. Some programs are State Programs which means they are available in all towns. Some programs are Local Programs which means they are available in Guilford and only available in other Towns that have also passed an ordinance authorizing that particular program. If you think you might be eligible for any of these programs, please call the Assessor's Office, Monday through Friday, 9:00 am to 4:00 pm for more information. There is also additional information about these programs (and other important information) on the Town's website: www.ci.guilford.ct.us under Departments; Assessor's Office. Please note: Exemptions are always stated in assessment dollars. To calculate the actual tax savings, multiply the assessment exemption amount by the appropriate mill rate (e.g., the assessment exemption amount is \$1,000 and say the mill rate is 22.36 so the tax savings is \$22.36 or \$1,000 times 0.02236).

ONE SPECIALLY EQUIPPED OR SIGNIFICANTLY MODIFIED MOTOR VEHICLE (LOCAL OPTION) owned by the applicant as of October 1, 2016 and used exclusively for the purpose of transporting the medically incapacitated owner is exempt if such vehicle is not for hire and the required application is filed with the Assessor's Office by November 1, 2016, or for such motor vehicles purchased after October 1, 2016, within 30 days of purchase.

ONE MOTOR VEHICLE FOR AN ACTIVE DUTY SERVICEMAN (STATE PROGRAM) is exempt if the motor vehicle is registered in Guilford. Forms for this exemption are available from the Assessor's Office and must be filed no later than December 31, 2016 for taxes due and payable July 2016.

DISABLED SERVICEMEN OR EX-SERVICEMEN (STATE PROGRAM) may apply for an additional exemption by filing Form 20-5455a (issued by the Veterans Administration) with the Assessor's Office by February 1, 2017. The Amount of the assessment exemption will vary depending on the degree of disability. If you have previously been granted an exemption because your disability is permanent or because you are 65 or older, then you do not have to re-apply.

FARM, FOREST OR OPEN SPACE (STATE PROGRAMS) applications must be filed between September 1, 2016 and October 31, 2016.

Give the Gift of Hope.

27th ANNUAL

Trees of Hope

HOLIDAY SPECTACULAR!

Presented by Anthem Blue Cross and Blue Shield

December 3-11, 2016

10 am - 5 pm / Open Daily

Maritime Center

555 Long Wharf Dr., New Haven, CT

www.rmh-ct.org

To benefit the families of Ronald McDonald House of CT. Over 100 decorated trees, table settings, holiday baskets and gifts to enjoy. All items on display are raffled off. (Winners chosen at conclusion of event.)



Ronald McDonald House Charities[®]
of Connecticut &
Western Massachusetts



There are additional requirements for the forest program, please call.

FARM MACHINERY (STATE PROGRAM) used exclusively by a qualifying farmer may qualify for a \$100,000 assessment exemption. An M-28 Form must be filed no later than November 1, 2016.

FARM MACHINERY (LOCAL PROGRAM) used exclusively by a farmer who qualifies for the above described program may be eligible for an additional \$100,000 assessment exemption. An M-28 Form must be filed no later than November 1, 2016.

FARM BUILDINGS (LOCAL PROGRAM) used exclusively for farming activities by farmers who are receiving an exemption for their farm equipment (see FARM MACHINERY (STATE PROGRAM) above) are eligible for an assessment exemption of \$100,000 for certain eligible farm buildings. An application must be filed no later than November 1, 2016.

Edmund Corapinski, Assessor
203-453-8010



Join us for wonderful events to support SARAH!

Tuesday, October 25th at 6 pm at the Guilford Community Center come and hear Attorney C.J. Griffith from Sullivan and Griffith LLP speak about “Making a

Lasting Contribution-The Ins and Outs of Planned Giving.”

Sunday, November 6th from 1 pm-4 pm the Madison Wine Exchange located at 188 Boston Post Road in Madison will host a wine tasting to benefit the SARAH Foundation.

Tuesday, November 29th is known as “Giving Tuesday.” There is Black Friday and Cyber Monday, but please do not

forget about Giving Tuesday! It is a day in which you can donate to a non-profit and make the world a better place.

Remember, many companies will match their employee’s contributions. Please visit your HR department to find out! To learn about all our events visit www.SARAHfoundation.org



Registrar of Voters

**Vote November 8, 2016 in the
PRESIDENTIAL ELECTION**

The Upcoming Election and what you should know:

On November 8, 2016 Guilford (and the entire country) will be voting for a new President of the United States. In addition, here in Connecticut, we will be voting for our US Senator, US Representative, State Senator and State Representative. The polling places will be open from 6 am until 8 pm. Unless you have moved, you will vote at your usual polling place. Please see the Registrar of Voters section in the website for town of Guilford, www.ci.guilford.ct.us for information on your exact voting place.

Make Sure You Are Registered To Vote. The Deadline Is November 1, 2016. Do It Sooner Rather Than Later.

Here's How:

Online Registration

It is now possible to register to vote, to change your address, name and/or party affiliation, online. The process is very easy. One path is to go into the Town of Guilford's website – www.ci.guilford.ct.us, choose Registrar of Voters from the Town Department list and then "Register to Vote Online" which is located on the left side of that page. Another way is through the Secretary of the State's website – www.sots.ct.gov,

choosing the Elections and Voting tab. A third, and the best way, is to go directly to the website, www.voterregistration.ct.gov. The only requirement for registering online is that you have a current Connecticut Driver's License with your Guilford address. This method of registering is available 24/7 until Tuesday, November 1, 2016.

DMV

When creating, updating or renewing your Connecticut drivers you will now be given the option to register to vote (if you are not already a registered voter in Connecticut), or to change your current voter registration. This is a new process to streamline the voter registration system – one-stop shopping.

ELECTION DAY REGISTRATION

If by any chance you have not been able to register to vote before November 8, 2016, you may come to our office, register to vote, and receive a ballot on Election Day. We highly recommend that Election Day registration be your last option. Your voting experience will be many times smoother if you complete your voter registration by November 1, 2016. On that day, the Registrars will be in their office to receive applications for voter registration until 8:00 pm. Our office will also be open until 7 pm on Wednesdays during the month of October.

AUTOMATIC FUEL DELIVERY • INSTALLATIONS • 24-HOUR EMERGENCY SERVICE

**MORONI
& SON LLC
OIL COMPANY**

860-388-2298

**FULL SERVICE
OIL COMPANY**

**447 Spencer Plains Road
Westbrook, CT 06498**

- Automatic Fuel Delivery
- Burner Installation
- 24-Hour Emergency Service



HOD 591
HTG.0403715-B1
0303724S1

PRE-SEASON SALE!

**Boilers • Oil Tanks • Hot Water Heaters
Hot Air Furnaces • Indirect Water Storage Tanks**

SAVE \$400

With this coupon.
Cannot be combined.
Expires 11/30/16



**TFI Everhot
Oil Fired
Water Heaters**
Cost: As low as
\$2600.00



**Williamson
Centennial
Low Boy
Oil Furnace**
Cost: As low as
\$3100.00



**New Yorker
High Efficiency Oil Fired
Water Boiler**
Cost: As low
as \$6200.00

**Call
for
Our
Current
2016-
2017
OIL
PLANS**

www.moroniol.com

SERVING FROM MIDDLETOWN TO EAST HAVEN

OTHER USEFUL INFORMATION

CURBSIDE VOTING

Curbside Voting is available if, for any reason, you cannot walk into your polling place on Election Day. Two poll workers will come to your vehicle and give you a ballot to fill out. Please call our office, 203-453-8028 when you are ready to go to the polls so we can set the process in motion and save you time when you get to the polling place.

PERMANENT ABSENTEE STATUS

We would like to remind you of the availability of permanent

absentee ballot status. Here's how it works: If you have a disability which prevents you from going to your polling place to vote you may file a request for an absentee ballot and include with that request a letter from your physician which states that your physical condition prevents you from going to the polls to vote. From then on the Town Clerk will automatically send you a ballot for every election, primary, and referendum, which you can fill out and return by mail. Every year we will send you a letter asking you to confirm the accuracy of your address. Now, isn't that simple?

Guilford Senior Craft Fair

DON'T MISS IT!

This year's Guilford Annual Senior Fair will be held on October 22, 2016 at the Guilford Community Center, 32 Church Street, from 9:00 am - 3:30 pm. Note the time change!

Our seniors have been working all year on beautiful holiday and everyday decorations, various sewn household

items, jewelry, and knitted and crocheted sweaters, hats, etc. Delicious cakes and cookies will be available for sale. There will be something for the whole family.

This year we decided to open the event up to private vendors. So anyone interested in renting a table, the cost is \$35, and please contact Pat Cahill at 203-483-6535.

The Guilford Annual Senior Craft Fair is a fund raiser for important senior and community programs. Breakfast and lunch will be prepared by the Senior Kitchen staff and will be available at a reasonable cost.

Please call Terry Buckley at 203-453-8086 to volunteer on Fair day.

The Guilford Foundation



Connecting People Who Care to Causes that Matter

Founded in 1975 by a group of friends intent on protecting the trees around the town green, TGF has grown to over \$2 million in endowment funds as of December 31, 2016, and we hope to invest nearly \$100,000 into Guilford this fiscal year through grants, scholarships and leadership initiatives. Support for our work to enrich the quality of life in Guilford has grown stronger each year, and we continue to invest an increasing amount of funds to local organizations serving our community. We have fully embraced our leadership role in the community, most recently through our efforts to address a lack of housing availability in town.

Looking for funding? TGF offers a quarterly, competitive grant cycle for organizations and projects serving Guilford citizens. Grant applications are available on our website (www.guilfordfoundation.org). The next deadline is December 1st, 2016.

For more information, including ways to give, visit our website at www.guilfordfoundation.org. Thanks to the support of this amazing community, TGF is positioned better than ever to meet our mission to "connect people who care with causes that matter to them" and improve the quality of life in Guilford: now, and for generations to come.

**Visit Our Town
at www.ci.guilford.ct.us**

The Dudley Farm Museum Celebrates the Change in Season!

The Dudley Foundation's Annual Harvest Day celebration is scheduled for October 22 from 9:30 am to 2:00 pm.

The Dudley Farm Museum and The Dudley Farm Farmers' Market will celebrate the Harvest with family fun and autumnal delights.

We invite you to join us for demonstrations of early 19th century skills, such as weaving on our 19th century loom, working the oxen, blacksmithing, cooking on the coal stove and grinding corn. There will be games like "hoop the pumpkin" and "beanbag toss," and hands-on crafts for children like spoon-doll making and pumpkin painting. Activities for young and old alike are designed to give a glimpse into farm life as it once was. The Farmhouse will be open for tours and visitors can stroll around the picturesque grounds and see the sheep, oxen and chickens, as well as antique cars and trucks.

Phase I of the Big Barn Project is complete. Take this opportunity to see the restored

granary and learn more about Phases 2 and 3 of the restoration project.

The Farmers' Market features seasonal produce, mums and cut flowers, eggs, baked and canned goods, naturally-raised meats, honey and maple syrup, pickles, jams and jellies. Our handmade arts and crafts include jewelry, soap, wood-working, pottery, baskets and beeswax candles, handspun yarn, paintings, photographs and cards, fiber art and accessories, mosaics and hand-painted glassware. Market vendors will be presenting demonstrations on spinning and soap making and a talk on beekeeping. The rain date for Harvest Day is October 29th.

The Summer Market

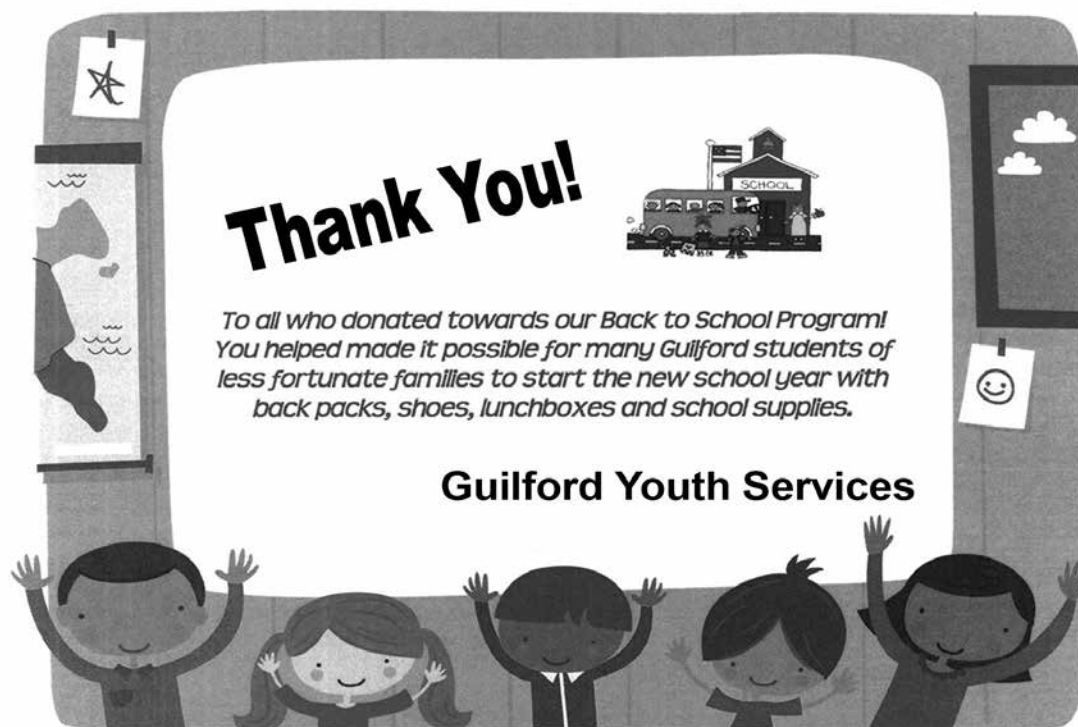
The Summer Market continues every Saturday, 9 am to 12:30 pm, through October and will end the season on October 29 with our 4th Annual Halloween Party. Market vendors are planning Trick-or-Treat

surprises between 9 am and 12:30 pm. Children must be accompanied by an adult.

With our Harvest over, can the Christmas Holiday be far behind?

Our Annual Holiday Open House & Market will again be held on two consecutive Saturdays in December, Dec. 3rd and 10th. Come enjoy cookies and cider at the Farmhouse, listen to music of the season, and admire the decorations in our 19th century home. Visit the Market in the Munger Barn for those special gifts. And don't forget, it will be your last chance to buy a raffle ticket for our handmade queen-sized quilt, "Twigs and Sprigs."

For more information, contact the Museum at 203-457-0770 or the Market at 860-349-3917, visit www.dudleyfarm.com or check us out on Facebook at Dudley Farm Museum. The market is subject to cancellation due to inclement weather.



Economic Development Department

2016 seems to be racing by and now we are entering our 4th quarter of the year. By the time this issue comes to your home, we expect **Carson's on Whitfield** restaurant will have opened. Many have been anxiously waiting for Carson's as they watched the renovations through the windows. Carson's is located at the corner of Whitfield and Water Street, next to **Distinctions Hair Studio and Day Spa**. Carson's will be open for lunch and dinner and Sunday brunch. The interior was completely renovated with seating for 84 people.

Shoreline Ballet has opened at 1795 Boston Post Road - Parkview Plaza, 3rd floor. Their mission is to provide dance education in an environment where every student is valued and respected. **R wireless** opened in the Guilford Commons shopping plaza. They are an independently owned Verizon authorized retailer, selling hardware and service plans with local support. As reported in our last issue, **PetCo** opened in this plaza and **Hair Cuttery** will be opening soon.

Although many suggestions have been voiced for a restaurant in this plaza, we have not been advised by the owners of any pending lease(s) for a restaurant. **ONYX** has returned to Guilford, located in the Quonset Hut, next to Perk on Church. ONYX features unique Australian clothing and accessories. Additionally, works from the Susan Powell Fine Art Gallery of Madison are on display and are available to purchase. On a sad note, the **Yuppy Puppy**, located in the Shoreline Plaza will be closing.

Numerous projects are moving through the developmental processes. As you drive along Route 1, you may have noticed construction is well underway at the former Fonicello's site, creating the **Patriot Medical Center**. The developers are expecting multiple medical professionals to occupy the site including support services retailers. Going forward, we are expecting significant construction activity to begin at **The Mews** (former Guilford Tavern - Route 1 West) as this site has been approved for 14 condominium units. **U Haul** is planning to renovate and expand its operations at the former Mannix site. The vast majority of the exterior construction and landscaping for the "Mill Building" at **66 High Street** has been completed. Interior work is continuing but several units have been sold and a few are occupied. Steel framing is underway on the first new building, the "Whitfield," and it should have the exterior work completed during Q4-16. Interior work will follow with units available to be occupied by mid 2017. Of course, we are entering the time of the year when weather may impact all construction schedules.

continued on page 10



Flooring • Paint • Blinds

We can help you choose from luxurious carpets, beautiful hardwoods, intricate patterned tile, and luxury vinyl.

Many choices available!

145 N. Main Street, Branford, CT

203.488.5637

Monday-Friday 7:30 -5:00

Saturday 8:00-4:00

www.joesfloorstore.com

FREE
Pint of Benjamin Moore Paint

Expires November 8, 2016

DR. PHILLIP LUCHINI DR. MICHAEL LUCHINI Luchini Orthopedic Surgeons

*Experience the personalized care you need
to get better, faster.*

**Total Joint Replacement • Arthroscopic Surgery
Hand & Foot Surgery • Ultrasound Guided Injections
PRP (Platelet Rich Plasma) • Full Service PT Department**

*Now accepting
new patients for
physical therapy*

**Our Vision is
State-of-the-Art
Orthopedics,**

Our Focus is YOU



1481 Chapel Street, New Haven, CT • 203.776.9110 • www.luchiniortho.com

ECONOMIC DEVELOPMENT ... continued from page 9

The historic character of the Town is a key asset - a vital economic driver that sets our community apart from so many other cities and towns along the shoreline.

All throughout the year, our community has activities and events that make Guilford a special and vibrant place to live, work, shop, dine and explore. The 4th quarter will be no

different. Please enjoy all Guilford has to offer. Should you have any questions about these businesses or any other in town, do not hesitate to contact me.

Brian McGlone, Economic Development Coordinator
203-453-8071 / mcgloneb@ci.guilford.ct.us

Guilford Art Center

DESIGNERS CIRCUS "POP-UP" FASHION & ACCESSORIES SALE - OCTOBER 7, 8, 9

Designers Circus, a Boston-based creative fashion and accessories event, is returning to Guilford and will hold a "pop-up" sale in the gallery at Guilford Art Center. The sale will open on Friday, Oct. 7 from 10 am-6 pm, Saturday, Oct. 8 from 10 am-6 pm and Sunday, Oct. 9, 11 am-3 pm.

Designers Circus is an "under the radar" sale, featuring new boutique women's clothing at wholesale prices that are 50-90% below regular retail prices. Shoppers will find creative fashions and accessories from over 70 domestic and international crafts-women and small-scale designers. A portion of the proceeds from sales will benefit Guilford Art Center's educational programs. Admission is free. All sales are final.

SOUP FOR GOOD – SUNDAY, NOV. 13

Enjoy a warm, soup supper while supporting two great shoreline organizations – Guilford Art Center and the Community Dining Room – at Soup for Good, Sunday, Nov. 13, 4:30 – 7 pm at Guilford Art Center. Guests are invited to attend to enjoy an entire meal, including a bowl of hearty soup, bread, dessert and glass of wine or sparkling water. Each guest gets to choose their own one-of-a-kind soup bowl, handcrafted by Guilford Art Center potters. Bowls will be washed to take home "for good." After enjoying soup, guests are invited to The Shop at Guilford Art Center to visit Artistry: American Craft Shopping for the Holidays. For tickets or more information, contact Guilford Art Center at (203) 453-5947 or www.guilfordartcenter.org.

BRANFORD BAIT & TACKLE

- Fresh & Saltwater Bait / Live & Frozen
- Large Selection of Fishing Rods & Reels
 - 3 Walls of Tackle & Accessories
 - Branford Clamming License
 - Fishing License
 - Block Ice & Bag Ice

Open 7 days / 7 am - 6 pm

By Land or By Sea

55 Goodsell Point Road
In Bruce & Johnson's Marina West

303-315-1313

**A full service veterinary hospital
earning your trust for over 60 years.**

Surgery - Dentistry
Endoscopy
Radiology - Ultrasound
Comprehensive On-Site Laboratory
Geriatric Medicine
Behavioral Consultations
Well/Preventive Care
Internal Medicine and Consultations
Cancer Treatment
Pain Management
OFA Hip X-Rays



OUR VETERINARIANS

Dr. Donald Mullen, VMD
Dr. Deborah Ackles, DVM
Dr. Anthony DellaMonica, DVM
Dr. Anita Soucy, DVM
Dr. Morna Pixton, DVM
Dr. Kirsten Nordt, DVM
Dr. Christina DeAngelo, DVM
Dr. Chelsea Anderson, DVM

GUILFORD VETERINARY HOSPITAL, LLP

81 Saw Mill Road
Guilford, CT 06437
(203) 453-2707
www.guilfordvet.com

**ARTISTRY: AMERICAN CRAFT SHOPPING FOR THE HOLIDAYS –
NOV. 3 – JAN. 8**



Guilford Art Center opens up its shop and gallery for its large, annual shopping event called Artistry: American Craft Shopping for the holidays. Handcrafted works by more than 200 artists from across America will be featured, including ceramics, glass, jewelry, clothing, ornaments, accessories, toys, specialty foods and much more. New artists and categories will be added this year, offering shoppers a huge array of unique gift ideas. New works are continually added throughout the course of the show. This is the best holiday shopping for beautiful, handmade work on the Shoreline! Artistry also offers visitors a variety of shopping experiences; personal shoppers are available for advice and gift-giving ideas; a registry makes gift-selection easy; and businesses can take advantage of personal shoppers and discounts for employee holiday gift-giving. Proceeds from Artistry benefit the exhibiting artists and Guilford Art Center's educational and community programs. Hours are Monday – Saturday 10am-5:30 pm; Sunday 12-5 pm. 7 Days a Week.

ARTISTRY OPENING RECEPTION IS THURSDAY, NOV. 3, 5-8 PM. FREE AND OPEN TO THE PUBLIC. JOIN US FOR SHOPPING AND HOLIDAY REFRESHMENTS.

GAC Members Week – Special Membership Benefits: From Nov. 3 – 9, GAC Members will receive 15% off all items and 10% off throughout the rest of Artistry. Become a GAC member at any time and immediately receive this benefit.

SPECIAL ARTISTRY EVENTS FEATURING HOLIDAY CHEER AND EXTENDED SHOPPING HOURS: FRIDAY, NOV. 18 AND THURSDAY, DEC. 8.



SCHOOL: CLASSES & WORKSHOPS FOR ADULTS & YOUTH

Registration continues through December 2016 for fall workshops and classes at Guilford Art Center. The 2017 Winter Semester registration opens Nov. 2, 2016. Visit www.guilfordartcenter.org for a full list of offerings and to register, or call the GAC office at (203) 453-5947.

Learn about the new Verizon Plan at Wireless Zone[®] of Guilford.

verizon[®]

Your local wireless experts.

Wireless Zone[®] is a Verizon Authorized Retailer.

Guilford

864 Boston Post Road

203-458-6700

WirelessZone.com/Guilford

WIRELESS ZONE[®]

IN PAIN?

Listen to your Body.

Headaches

Numbness in hands or feet

Neck Pain

Sciatica

Low back pain

Painful joints

Pain in your arms or legs

THESE ARE WARNING SIGNS THAT
THERE MAY BE INTERFERENCE TO
YOUR NERVE SYSTEM.

Find Out How Chiropractic
Can Help! Call Today for a
FREE CONSULTATION

Heeren Family
Chiropractic
Center
Guilford



Like Us
on
Facebook!



203-453-9888

www.heerenchiro.com

Fall Events on the Guilford Green

OCTOBER 15TH EVENTS

HALLOWEEN WINDOW PAINTING

On Saturday October 15th Guilford Youth & Family Services, Guilford Parks & Recreation and It's Worth It, a Guilford DAY initiative, will collaborate to bring their annual Halloween Window Painting Contest to the Guilford Green. Sketches must be submitted to Karolin Regan @ GY&FS by October 7th to ReganK@ci.guilford.ct.us. The contest will take place from 10:00-12:00 pm. Individuals, groups and families (up to 7 individuals) are encouraged to decorate a business window for the fall season. Supplies will be provided. Rain date: October 16th. Winner will be announced at



The Halloween Spooktacular on October 30th. \$25.00 per group. Register online at www.guilfordparkrec.com with program #41112 or call (203) 453-8068 for more information.

SCARECROW BUILDING CONTEST

Also taking place on October 15, The Shoreline Chamber of Commerce partnering with Guilford Parks & Recreation and Guilford Youth and Family Services will hold a Scarecrow Building Contest. Businesses will have an opportunity to build a scarecrow that represents their business which will then be displayed on the town green. \$25.00 fee per scarecrow. Proceeds to benefit It's Worth It, a Guilford DAY initiative. Guilford DAY and its supporters help Guilford youth make positive choices, ultimately reducing drug and alcohol use. Register online at www.guilfordparkrec.com with program #41112.

CHOWDER CHALLENGE FOR A CAUSE

The Shoreline Chamber of Commerce is sponsoring its 3rd Chowder Challenge for a Cause from noon to 3:00 pm on October 15th. Each chef chooses a local charity to partner with. If they receive the most votes, their charity will receive a \$500.00 check from the Shoreline Chamber. The chef/restaurant will receive a trophy that they may keep for one calendar year.



Now Accepting Registrations for ALL AGES!

Private Accredited Center Offering:
Comprehensive Curriculum
Full Time Pre-K Program
Spanish by *Aux 3 Pommes*
Music Enrichment
Flexible Schedules

203-453-0261
447 Boston Street
Guilford, CT



cradles-2-crayons.com

**GUILFORD
CROSSFIT**



*Confidence
is Contagious!*

Catch some today at
Guilford CrossFit.



In addition to CrossFit we now offer boot camp and TRX classes. We also do kid's birthday parties.

First class is free.

387 Soundview Road, Guilford
(203) 530-1725
www.guilfordcf.com
guilfordcrossfit@gmail.com

Winner will be announced approximately 3:30-4:00 pm on the day of the event. Registration/check-in will be on the Guilford Green (under the tent) where you will receive a map of the chowder locations in restaurants or merchant locations, ballot,

bottle of water, and a tote bag. This is a walking tour of Guilford as you taste chowder from local chefs and choose the best of 2016. RAIN or SHINE! Call the chamber for a ticket (\$10.00) 203-488-5500 or go on the website to register: shorelinechamberct.com.

**OCTOBER 30th EVENT
HALLOWEEN SPOOKTACULAR**



On October 30th from 2:00-4:00 pm, the Halloween Spooktacular will take place on the Guilford Green. This event is sponsored by Guilford Parks & Recreation, Guilford Youth & Family Services and It's Worth It, a Guilford DAY initiative. Activities will be a performance on stage, inflatables, ice cream from Ashleys and more! Park Street will be utilized for a "trunk or treat." Please register your families, organizations, businesses "trunk" to be part of this wonderful community event.

To register a "trunk" for this event please go online to guilfordparkrec.com (program #41106). For more information contact Ellen @ (203) 453-8068.

THIS YEAR,
BE GREATER THAN

My fear of geometry!
Tae-Ho K., freshman

A new school year brings a fresh start—and Mathnasium is here to help set the stage for success!

Together, we can make this school year **greater than** last year!

Free Trial Session

Math Help and Enrichment | Test Prep | Homework Help

MATHNASIUM
The Math Learning Center

Mathnasium of Guilford
203-927-0007
mathnasium.com/guilford
1063 Boston Post Road
Guilford, CT 06437

SAVE WATER

*Saving our customers resources
and rising maintenance costs since 1974.*

American Leak Detection
Property Managers • Insurance • Realtors

Pool & Spa Leak Detection
Water • Sewer • Fountains • Water Features

Line Location
Utilities • Septic Line Location • Video Inspections

Concealed Plumbing Leaks
Under Slabs • Inside Walls • Main Service Lines

 **AMERICAN LEAK DETECTION**
THE ORIGINAL LEAK SPECIALISTS™

203.691.7110
AmericanLeakDetection.com

Each office independently owned and operated.

Henry Whitfield State Museum

MAY 4 - DECEMBER 11

Hours: 10:00 am - 4:30 pm, Wednesday - Sunday

Admission: \$8 Adults

\$5 Children (6-17)

\$6 Seniors & College Students

FREE for children under age 6

SEPT. 28-DEC. 11 (WED.-SUN.) 10-4:30

“Holidaze: The Real Story of Halloween, Thanksgiving & Christmas”

Exhibit exploring the origins and myths of the holidays from ancient Rome to 21st-century commercialism.

Visitors are encouraged to bring donations for UNICEF, Guilford Food Bank, and Toys for Tots.

Included with admission.

OCTOBER 22 (SATURDAY) 10-4:30

Halloween Hysterics at Henry’s

The lights will be off in Connecticut’s oldest house, so bring a flashlight to explore. Also enjoy craft activities, displays on the Whitfield/Salem Witch Trial connection and the cemeteries under the Guilford Green and tours of the Holidaze exhibit.

Included with admission.

Nov. 25, 26 & 27 (Fri.-Sun.) 10-4:30

Harvesting History

Reproduction trade items, samples of 17th-century recipes, “Make Your Marke” quill pen activity, reading of the Pilgrim Cat storybook each hour and tours of the Holidaze exhibit.

Included with admission.



DECEMBER 2 (FRIDAY) 4 PM-8:00PM

Firelight Festival

Festive luminaria, outdoor fires, popcorn, roasted marshmallows, s’mores, hot chocolate, hot cider, Connecticut’s oldest house after dark, the Holidaze exhibit, natural holiday ornaments crafts, and a reading of *The Night Before Christmas*. Included with admission.

No rain/snow date.



DEC. 10 & 11 (SAT.-SUN.) 10-4:30

Puritan Past, Holiday Presents

10% off gift shop purchases, make an ornament, *The Night Before Christmas* readings, tours of the Holidaze exhibit and the 1639 Whitfield House, plus hot cider, hot chocolate, and holiday cookies. Included with admission.

DEC. 14-16 (WED.-FRI.) 10-4:30

DEC. 19-23 (MON.-FRI.) 10-4:30

Gift Shop & Visitor Center Open

Holiday shopping, Holidaze exhibit, and Guilford Goes Global display. Free admission (Whitfield House is closed)

248 Old Whitfield Street

Guilford, Connecticut 06437-3459

Phone: 203-453-2457

Fax: 203-453-7544

E-mail: whitfieldmuseum@ct.gov

Website: www.cultureandtourism.org

GUILFORD COMMUNITY LISTINGS

CHURCHES

Bethel Assembly of God.....203-453-5171
 Christ Episcopal Church203-453-2279
 First Church of Christ Scientist203-453-9175
 First Congregational Church.....203-453-5249
 Focus Pointe Ministries
www.focuspointeministries.org
 North Guilford Congregational Church
203-457-0581
 St. George Catholic Church.....203-453-2788
 St. John's Episcopal Church.....203-457-1094
 Vineyard Church of Guilford.....203-453-5453

CLUBS/ORGANIZATIONS

Guilford Agricultural Society.....203-453-3543
 Guilford Art Center.....203-453-5947
 Guilford Garden Club.....203-453-5203

Guilford Land Conservation Trust ..203-457-9253
 Leete's Island Garden Club203-453-3884
 Shoreline Chamber of Commerce...203-488-5500
 Women and Family Life Center.....203-453-6699

LIBRARY

Guilford Free Library203-453-8282

MUSEUMS

Henry Whitfield State Museum203-453-2457
 The Dudley Farm Museum203-457-0770
 The Hyland House203-453-9477
 Medad Stone Tavern.....203-453-2263
 Thomas Griswold House.....203-453-2263

POST OFFICE

Guilford Post Office.....203-453-2429

SCHOOLS

Adams Middle School203-453-2755
 A.W. Cox School203-453-5291
 Baldwin Middle School.....203-457-0222
 Calvin Leete School.....203-453-0128
 Guilford High School.....203-453-2741
 Guilford Lakes School.....203-453-5201
 Melissa Jones School203-457-0773
 BOE Administrative Offices.....203-453-8200

USEFUL NUMBERS

American Red Cross.....203-787-6721
 Firemen's Field.....203-458-8812
 Guilford Food Bank.....203-453-8166
 Guilford Newcomers Club
 www.guilfordnewcomers.com
 Meals on Wheels203-453-8359



www.michaeldentalcare.net
 203.453.0499

Michael Dental Care LLC
 General & Cosmetic Family Dentistry

Vincent J. Michael, DMD FICOI

*High-tech, comfortable dental care in
 a uniquely relaxing environment*

LIKE US ON FACEBOOK!

COMPUTER PROBLEMS DRIVING YOU NUTS?



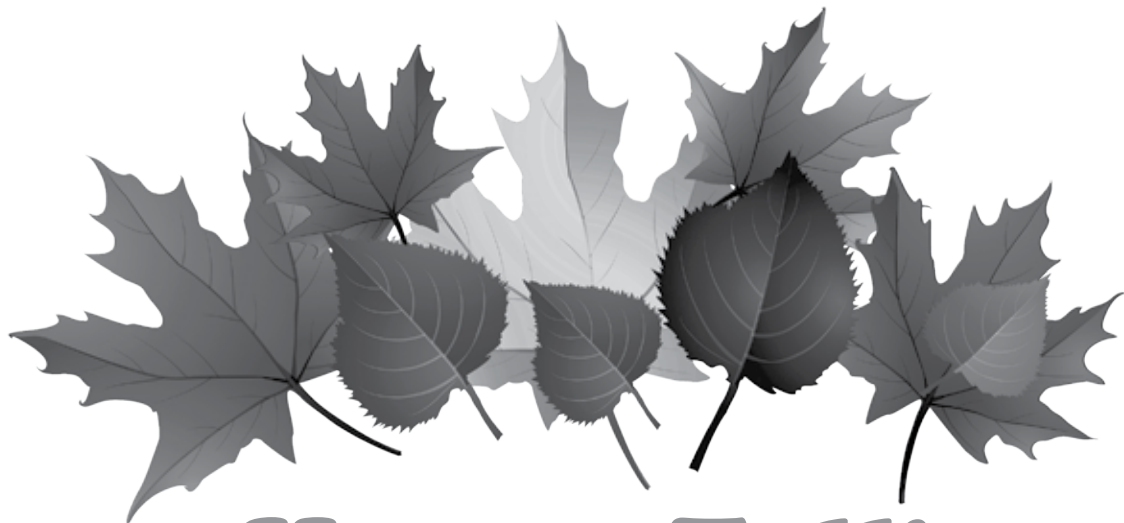
- Unlimited Support – One Low Price
- Server, Network & Workstation Maintenance
- Network Security & Proactive System Monitoring
- Local and Online Backup and Recovery
- 2 Free Hours or Free System Analysis - Just to Give Us A Try (Offer for 4 or More Computers)

Now Celebrating 10 Years of Helping Business' Increase Productivity and Profits!

TechNet
 computing

rob@technetcomputing.com
 www.technetcomputing.com

860.740.0328



Happy Fall!

from all of us at Events Magazines & Essex Printing

Good hearing is
PRICELESS



Is it time to get your hearing checked?

 **County Hearing and Balance**

MADISON
82 Bradley Road
203-245-1950

Call us for a Free Initial Consultation
All services by Doctors of Audiology
www.countyhearingandbalance.com

Guilford 
ANIMAL MEDICAL CENTER

The Family Practice For Your Pets

- Preventive Care
- Internal Medicine
- Surgery • Dental
- Radiology • Ultrasound
- Nutrition • Behavioral Services

BRING THIS AD TO GET
\$50 OFF
YOUR FIRST VISIT

1795 Boston Post Road, Guilford, CT 06437
203-453-0375 / www.GuilfordAMC.com
M-F 8 am-6 pm / Sat 8am-1pm

GUILFORD TOWN HALL DIRECTORY

www.ci.guilford.ct.us

DEPARTMENT	EMPLOYEE / TITLE / ADDRESS	PHONE	E-MAIL
ASSESSOR	Ed Corapinski, Assessor, Town Hall - 31 Park Street	453-8010	corapinskie@ci.guilford.ct.us
BUILDING	William Thody, Building Official, Town Hall South - 50 Boston Street	453-8029	thodyw@ci.guilford.ct.us
ECONOMIC DEVELOPMENT	Brian McGlone, Economic Development Coordinator, Town Hall - 31 Park Street	453-8071	mcgloneb@ci.guilford.ct.us
ENGINEERING	James Portley, Town Engineer/Facilities Mgr. Town Hall South - 50 Boston Street	453-8029	portleyj@ci.guilford.ct.us
ENVIRONMENTAL PLANNING	Kevin Magee, Environmental Planner, Town Hall South - 50 Boston Street	453-8146	mageek@ci.guilford.ct.us
FINANCE	Maryjane Malavasi, Finance Director, Town Hall - 31 Park Street	453-8027	malavasij@ci.guilford.ct.us
FIRE	Charles Herrschaft, Fire Chief/Fire Marshal, Fire Headquarters - 390 Church Street	453-8056	gfd10@guilfordfire.com
GUILFORD LAKES GOLF COURSE	Ted Tighe, Golf Course Superintendent, 200 North Madison Road	453-8217	guilford_lakes@hotmail.com
HEALTH	Dennis Johnson, Director of Health, Town Hall South - 50 Boston Street	453-8118	johnsond@ci.guilford.ct.us
HOUSING AUTHORITY	Guilford Court - 32 Guilford Court Boston Terrace - 41 Boston Terrace Sachem Hollow - 310 State Street	453-4760 453-4760 453-4760	
HUMAN RESOURCES	Mitch Goldblatt, Director of Human Resources, Town Hall - 31 Park Street	453-8075	goldblattm@ci.guilford.ct.us
LEGAL/PURCHASING	Pamela Millman, In-House Counsel/Purchasing, Town Hall - 31 Park Street	453-8015	millmanp@ci.guilford.ct.us
LIBRARY	Sandy Ruoff, Library Director, Guilford Free Library - 67 Park Street	453-8282	sruoff@guilfordfreelibrary.org
MARINA	Rod McLennan, Dockmaster	453-8092	townmarina@att.net
PARKS & RECREATION	Rick Maynard, Park & Rec Director, Community Center - 32 Church Street	453-8068	maynardr@ci.guilford.ct.us
PLANNING & ZONING	George Kral, Town Planner, Town Hall South- 50 Boston Street Regina Reid, Zoning Enforcement Officer - Wetlands	453-8039 453-8039	kralg@ci.guilford.ct.us reidr@ci.guilford.ct.us
POLICE	Jeff Hutchinson, Police Chief, Police Headquarters - 400 Church Street Animal Shelter Routine Calls	453-8244 453-8083 453-8061	hutchinsonj@ci.guilford.ct.us
PUBLIC WORKS	Tom Fillion, Highway Superintendent, Public Works Garage - 47 Driveway	453-8081	filliont@ci.guilford.ct.us
REGISTRAR OF VOTERS	(D) Louise Graver, Registrar, Town Hall- 31 Park Street (R) Gloria Nemczuk, Registrar, Town Hall- 31 Park Street	453-8028 453-8028	registrar@ci.guilford.ct.us registrar@ci.guilford.ct.us
SELECTMAN'S OFFICE	Joe Mazza, First Selectman, Town Hall- 31 Park Street	453-8021	mazzaj@ci.guilford.ct.us
SOCIAL SERVICES	Tammy DeFrancesco, Social Services Director, 263 Church Street	453-8009	defrancescot@ci.guilford.ct.us
STUMP DUMP		453-8029	
TAX COLLECTOR	Debi Milano, Tax Collector, Town Hall - 31 Park Street	453-8014	milanod@ci.guilford.ct.us
TOWN CLERK	Anna Dwyer, Town Clerk, Town Hall - 31 Park Street	453-8001	dwyera@ci.guilford.ct.us
TOWN PROPERTIES	Steve Neydorff, Facilities Engineer, Town Hall South - 50 Boston Street	453-8487	neydorffs@ci.guilford.ct.us
TRANSFER STATION	1900 Boston Post Road	453-8095	
YOUTH & FAMILY SERVICES	Lyne Landry, Director, 36 Graves Avenue	453-8047	landryl@ci.guilford.ct.us

Sunglasses Now or Botox Later

We all wear sunglasses in the summer, but do you wear them all year round? When you think of wearing sunglasses, chances are you are thinking about protecting your eyes; but it's not just your eyes that will benefit from the protection. The skin around your eyes will thank you too.

Squinting is a natural reflex caused by exposure to bright light. It's the body's way of protecting your eyes until they adjust to their surroundings. However, when you squint you contract muscles around your eyes that are responsible for the development of crow's feet and also deep furrows in-between your eyebrows.

The skin around your eyes is the thinnest skin on your body and one of the first areas to show signs of aging. Also, there are no oil glands in the skin under your eyes, which hastens wrinkle formation

Wearing sunglasses will help your aging eye skin in a few ways. First the sunglasses will protect your skin from direct exposure to sunlight which is the number one cause of

premature aging. Secondly, sunglasses will prevent you from squinting and thereby overusing your muscles. And let's not forget about protecting your eyes themselves from harmful UV damage.

Because the muscles of the face are attached directly to your skin, overusing these muscles will lead directly to wrinkling, crow's feet and eyebrow furrows. But fear not if you already have crow's feet or furrows. Botox injections will temporarily reverse these problem areas, returning the skin around your eyes to a much smoother texture.

Botox is the number one non-surgical cosmetic treatment in the country. The injections are not painful and the procedure can be done on your lunch break. Results are temporary and usually last between three and four months.

So if you lost another pair of sunglasses, you can still have the look!

Susan O'Malley, M.D.
Sonas Med Spa



Council of Business Partners at



COMMUNITY
FOUNDATION
of Middlesex County

- A & A Office Systems
- A.R. Mazzotta Employment Specialists
- Belltown Motors
- BEST Cleaners
- The Black Seal
- Brown & Brown of CT, Inc.
- Connecticut Lighting Centers
- Direct Energy
- East Hampton Rotary Foundation, Inc.
- Essex Printing/Events Magazines
- Interfaith Golf Open Tournament, St. Mary's Church, Portland and Congregation Adath Israel, Middletown
- LiveKind
- Mahoney Sabol & Co., LLP
- Malloves Jewelers, Middletown
- M&J Bus Company, Inc.
- Paulson Training Programs, Inc.
- Nancy Raczka, Attorney
- The Rossie Group
- Elizabeth Shulman, LMFT
- Suburban Stationers, Inc.

IN PARTNERSHIP WITH: *Connecticut Association of Schools; Rushford, a Hartford Healthcare Partner; EMPOWER Leadership Sports; The First Tee of Connecticut; iCRV Radio; Donny Marshall.*

STAND UP TO MEAN-SPIRITED BEHAVIOR.

Did you know that one out of seven students are either a bully or a victim of bullying? And that an estimated 160,000 children miss school each day for fear of intimidation or attack? Mean-spirited behavior is everywhere - the playground, school hallways, the workplace, and more often, online. It is up to each and every one of us to put an end to bullying by learning more about the issues, and the available resources for empowering individuals to stand up for themselves and others.

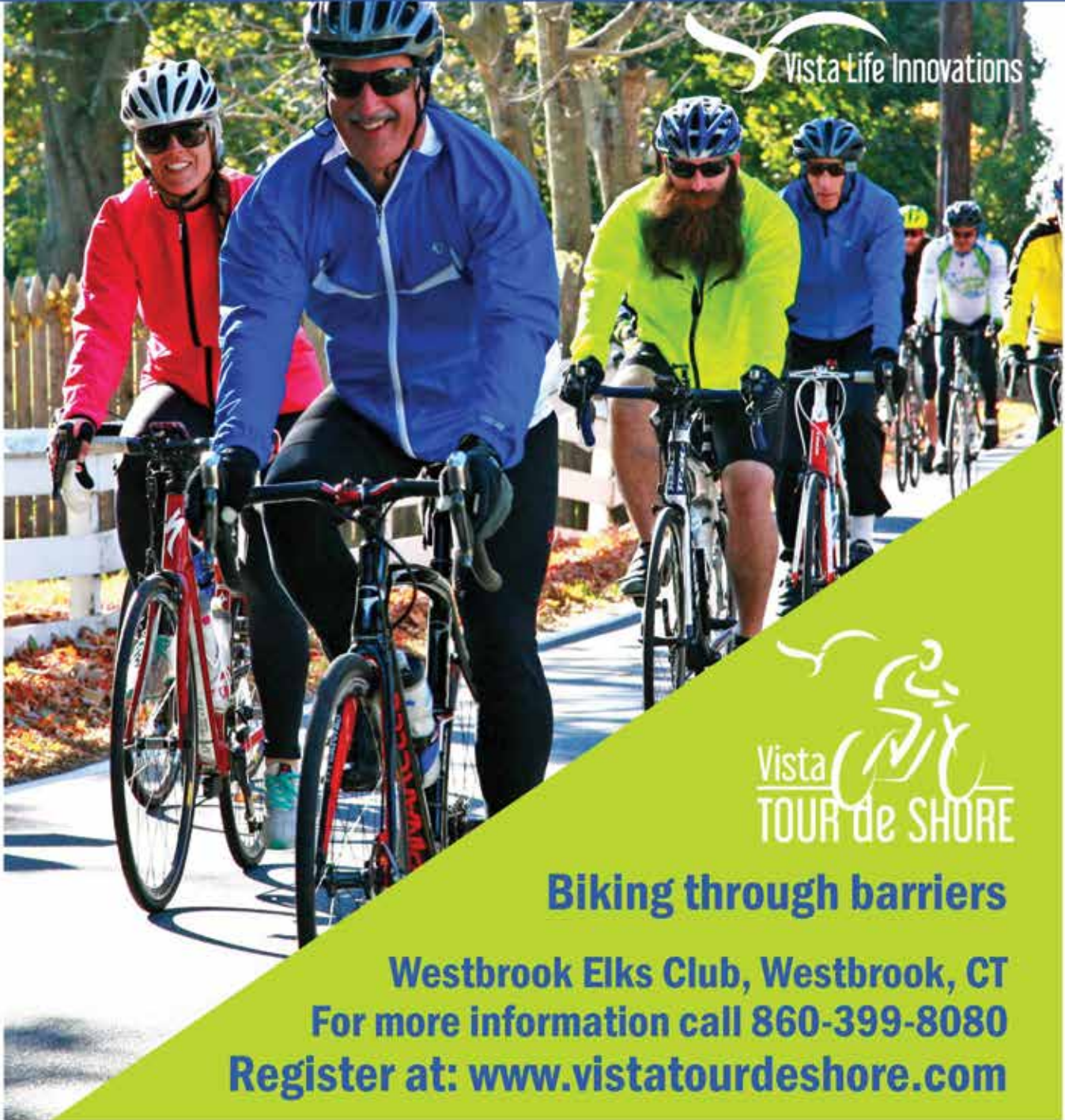
Help make Middlesex County a bully-free community.

Join us as we work together to make each and every community a positive place for change. For more information, call us at the Community Foundation of Middlesex County at 860-347-0025 or go to www.bullyfreemiddlesexcountycf.org.

TAKE THE PLEDGE.

BULLYFREEMIDDLESEXCOUNTYCF.ORG

2016 Vista Tour de Shore
SUNDAY, OCTOBER 16



Vista Life Innovations



Biking through barriers

Westbrook Elks Club, Westbrook, CT

For more information call 860-399-8080

Register at: www.vistatourdeshore.com



Call and Visit Your Neighborhood
Hometown Pharmacist Doug Kane

Flu Shots Now Available - Call for Information

We strive to provide the
highest level of personalized
care and service.

“Service the way it ought to be”



**Connecticut Pharmacy
of Madison**

200 Boston Post Road, Madison
Across from Hammonasset Ford
203-421-2132

Sunday: 9:00 am-3:00 pm / Mon-Fri: 8:30 am-7:00 pm
Saturday: 9:00 am-5:00 pm

Youth and Family Services



INTERNET SAFETY

Presented by: Scott Driscoll of
Internet Safety Concepts



DATE: November 3rd
TIME: 7:00 - 8:30 pm.
LOCATION: Adams Middle
School, 233 Church Street,
Guilford

- Apps and programs children are using
- Cyberbullying, sexting and social networking
- Creating a “digital footprint” (positives and negatives)
- Tips on how to use technology in the safest way
- Strategies on keeping families safe

THIS PRESENTATION IS FOR PARENTS
AND THEIR CHILDREN GRADES 7-12.
(Not appropriate for younger children)

Refreshments provided by GHS Connections.
Please contact Guilford Youth & Family Services
to register for this FREE program (203) 453-8047.

Saint Mary School

Educating the whole child for a lifetime and beyond!



Advanced education
along the shoreline with aftercare
programs. We offer a global per-
spective and an emphasis on moral
education, community and service.

- NEASC Accredited
- Small Class Sizes
- Quality Faculty
- Affordable Tuition

Grades PreK-3
to
Grade 8
smsbranford.org

Personal tours & shadow days available, call
(203) 488-8386 for your appointment today!



Parkinson's Exercise Program

**Local Parkinson's Exercise Program Shows Great Results
in Helping People with Parkinson's Feel Better**

East Shore Region Adult & Continuing Education is hosting
classes by Beat Parkinson's Today, an exercise program de-
signed specifically to improve Parkinson's symptoms.

There are presently 12 classes per week in 4 locations in
CT with almost 50 Parkinson's clients participating.
Results have been astounding. Clients have improved
gait, balance, fine motor control, explosive movement,
attitude, self-image, and fatigue. Some have lowered
their dosage of their medications.

For more information: www.beatpdtoday.com.

Want to Reach Every
Home & Business
in Town?

Call
Nancy Salk
at
203.219.3282



FORTE'S
Gourmet Market
~ Since 1914 ~

As always, our Prepared Foods are available for everyday and parties.

- New menu items including Gluten Free options
- Fresh loaded salad and soup bar

Holiday Season is Approaching

All Natural
and Organic Fresh
Chickens
and Turkeys

You can count on us for the Best Quality Family Farmed, Source Verified Safe and Healthy Meats.

Also Grass Fed Finished Beef and Local Salt Marsh Farm Beef.

Grass Fed, Grass Finished Beef and Local Salt Marsh Farm Beef - Both Antibiotic & Hormone Free

203-453-4910
1153 Boston Post Road, Guilford, CT
fortesmarket@gmail.com

CHERYL AIUDI & SON L L C
Family Fuel Oil



HOD License #0001103

Call For 2016-2017 Offerings

Prepaid Set Price ALL HEATING SEASON!

Cap & Budget Plans (10-12 Month Plans Available)

LIMITED OFFER EXPIRES 9/30/16.

OUR LOW OVERHEAD IS \$ LEFT IN YOUR FAMILY'S POCKET!

YOU CAN START USING YOUR OIL NOW! LIMITED SUPPLY: CALL TODAY FOR DETAILS!

**Call Now
and SAVE**

860-661-5126

**We Accept
Cash, Check and
Most Credit Cards**

Our Family has been Servicing Families, Commercial & Industrial Facilities Statewide for over 70 Years!

SUNSET LIMOUSINES
Since 1986

LIMOUSINE • SEDAN • SPORT UTILITY • SPRINTER MINI-COACH • VAN • COACH • LIMO BUS

Sunset Limousine is proud to offer an impeccable, versatile fleet.

Proudly servicing the shoreline for 30 years.

203-453-7730
203-245-5018
www.sunsetlimousines.com

VALUE - QUALITY - EFFICIENCY FULLY LICENSED & INSURED UNDER NEW OWNERSHIP

SALES REPRESENTATIVE

Due to expanded growth we are seeking a full time sales representative to sell advertising in our *Events Town Magazines*.

We seek someone experienced who understands the consultative sales process.

Responsibilities include maintaining ongoing relationships with existing clients including daily contact over the phone and in person, meeting and exceeding sales goals, and identifying and capturing new business through cold calling.

Apply if you are an overachiever.
Send resume to print@essexprinting.com.

Coastal Cooking Company

Catering on the Waterfront
Essex Corinthian Yacht Club
or
Your Location

We Make Events Special

Reserve Now
Weddings, Rehearsal Dinners, Showers, Graduations,
Birthdays, Business Events, and Special Occasions
Call Monique for a free consultation
860-501-5036
monique@coastalcookingcompany.com
9 Novelty Lane, Essex, CT 06426

GET MONEY FOR YOUR GOLD

The Original

GUILFORD COIN EXCHANGE

Local Business Since 1970

Open Monday - Saturday
9:30 am - 4:30 pm

69 Whitfield Street, Guilford, CT
On The Guilford Green / Exit 58 off I-95
203-453-9363

Discounts as big as a house. Or condo. Or apartment.

See just how big your savings could be. Your savings could add up to hundreds of dollars when you put all your policies together under our State Farm® roof. **GET TO A BETTER STATE.™**
CALL ME TODAY.

LaTorre Osterling Ins Agcy Inc
Lauren LaTorre-Osterling, Agent
38 Academy Street
Madison, CT 06443
Bus: 203-245-4555
Fax: 203-245-4730

State Farm™

State Farm Mutual Automobile Insurance Company,
State Farm Indemnity Company, Bloomington, IL
1103155.1



Shoreline Chamber of Commerce

Take advantage of Guilford's new state of the art kiosk! Located on Church Street next to the Nathanael B. Green Community Center, the stand-alone kiosk features an interactive touch-screen computer monitor accessible from the exterior, as well as display cases for historic and current events in the interior. During the summer, volunteers staff the kiosk Wednesday through Sunday from 10 am to 4 pm. The computer monitor is available 24 hours a day, every day, year round. Visit guilford.com is a stunning guide to our town.

UPCOMING EVENTS:

3rd Annual Chowder Challenge for a Cause – October 15th.



The 3rd annual Chowder Challenge for a Cause is on Saturday, October 15 from 12-3 pm. Each participant can enjoy chowder from over a dozen restaurants. All tasters become judges, voting for their favorite taste! The winning chef receives a trophy and

the charity of his/her choice receives a check from the Chamber. Please call the office for more information: (203) 488-5500.

Dancing with the Stars –

November 11th Chamber Dance

Dancing with the Stars is a fun-filled evening – all of the stars are local to our area and put on a great show. The \$50 per person entry free entitles you to a delicious dinner, a chance to watch all of the talented dancers, and is followed by open dancing for everyone! Held at the Country House in East Haven, the event runs from 6 - 10 pm. Contact the Chamber – 203.488.5500 for more information.



Travel

The Chamber is planning two exciting trips. Pompeii and the Amalfi Coast departs on October 16, 2016 (only a few spaces left!). Our newest trip is a 10 day, one hotel visit to Tuscany on March 28. Please contact Kathy@shorelinechamberct.com or call (203) 488-5500 for further information.

ALL INVENTORY MUST GO!



860-388-2298

HOD 591
HTG.0403715-B1
0303724S1

*A Family Business
Serving Families*



\$500 OFF
COMPLETE CENTRAL AIR SYSTEMS
 With this coupon. Cannot be combined. Expires 11/30/16

YIKES!
TOO
HOT!



HOUSE SIZE Square Footage	MODEL	TONNAGE	FOR AS LOW AS
850 - 1000 SF	RAKA024JAZ	2	\$5,400.00
1,000 - 1,250 SF	RAKA030JAZ	2.5	\$5,650.00
1,250 - 1,500 SF	RAKA037JAZ	3	\$5,900.00
1,500 - 1,750 SF	RAKA042JAZ	3.5	\$6,500.00
1,750 - 2,000 SF	RAKA048JAZ	4	\$6,700.00
2,100 - 2,500 SF	RAKA060JAZ	5	\$7,400.00

Price Guide for basic complete installation. Two-day installation in most cases.

Call Moroni & Son, Your Local Ruud Dealer For A FREE Estimate

THREE GENERATIONS, OVER 60 YEARS OF CONTINUOUS SERVICE

Welcome to the
Neighborhood
WHERE RESIDENTS COME FIRST



Artis Senior Living of Branford

is a brand new premier memory care residence being built on three acres in picturesque New Haven County. Artis Senior Living embodies a philosophy of positive partnership, honed from over 200 years of collective professional and personal experience in senior care .

- Four distinct neighborhoods surrounding a central Neighborhood Square, allowing residents to move freely within our enclosed community
- Private studio residences
- Planned daily programming incorporating meaningful activities focusing on daily life and tailored to individual interests and abilities
- Chef-prepared meals served family style
- Licensed nurse onsite 24-hours a day
- Bright, inviting atmosphere, engaging activities, and predictable routines encourage independence and involvement
- Enclosed outdoor courtyards and beautiful walking trails

We would love to answer your questions about residentail memory care at Artis.

Contact Renee Michaud at rmichaud@artismgmt.com or (203) 859-1474 to schedule a talk.

An Equal Opportunity Employer-M/F/D/V

PRE OPENING SALES OFFICE:
2415 Boston Post Road • Unit #12 • Guilford, CT 06437

COMMUNITY LOCATION:
814 East Main Street • Branford, CT 06405
www.artisseniorliving.com/branford



PANTRY • GARAGE • OFFICE • ANY SPACE • CLOSETS • PANTRY • GARAGE • OFFICE • ANY SPACE • CLOSETS • PANTRY • GARAGE • OFFICE • ANY SPACE • CLOSETS • PANTRY • GARAGE • OFFICE • ANY SPACE • CLOSETS • PANTRY • GARAGE • OFFICE • ANY SPACE • CLOSETS

Tired of Clutter and Wasted Space?

- Let Us Create a Custom Designed Storage System
- Maximize every inch of space to fit your Specific needs

VISIT OUR NEW SHOWROOM IN DURHAM
(call for an appointment)

Call Carl for a FREE Consultation
203-804-0311

Licensed and Insured

Carl's Closets LLC
SPECIALIZING IN CUSTOM SPATIAL ORGANIZATION
"Closets with Integrity"

Over 25 Years Experience

THE SHORELINE'S MOST EXPERIENCED AND ACCOMMODATING CLOSET COMPANY

www.carlsclosets.com • 28 Main Street, Durham CT

BEAUTIFUL TREES MAKE A HOUSE A HOME.

We're Bartlett Tree Experts, a 100+ year old tree and shrub company with global reach and local roots. Our services include:

- Tree & Shrub Pruning
- Cabling & Bracing
- Fertilization & Soil Care
- Insect & Disease Management

BARTLETT TREE EXPERTS
FOR THE LIFE OF YOUR TREES.

Call us at 203.453.1357 or visit us at BARTLETT.COM

THE PERFECT COMPANY PROMOTION | GIVEAWAY!

It's time to order

YOUR 2017 DESK CALENDAR from Essex Printing

**LET US
PERSONALIZE IT
FOR YOU!**



Pricing*

25 | 50 | 75

\$115 | \$187 | \$245

(^o4.60 ea) (^o3.74 ea) (^o3.25 ea)



We'll put your logo and information on each calendar page, plus one page for greeting and information.

*Using Essex Printing's images and calendar layout, standard jewel box (5x5½"), assembly required.
Please allow 2 to 3 weeks for proofing/production.

Special pricing for custom images and calendar assembly.
Minimum order of 10.

GREAT GIFT IDEA FOR FAMILY AND FRIENDS!

Essex Printing 18 Industrial Park Road • Centerbrook, CT 06409 • 860-767-9087 • www.essexprinting.com



GUILFORD EVENTS

Town Hall
31 Park Street
Guilford, CT 06437

PRSR STD
U.S. Postage
PAID
Permit No. 155
Deep River, CT

POSTAL CUSTOMER

DEPOSIT CHECKS ANYTIME, ANYWHERE

with
**Essex Savings Bank's
MOBILE
BANKING
APP**

The Essex Savings Bank mobile app now includes a free, easy and convenient "Deposit a Check" feature. The deposit will be made into your existing business or personal account – another convenient way to bank with Essex Savings Bank.

Visit essexsavings.com for details.



Essex, 35 Plains Road, 860-767-2573 • Essex, 9 Main Street, 860-767-8238
Chester, 203 Middlesex Avenue, 860-526-0000 • Madison, 99 Durham Road, 203-318-8611
Old Lyme, 101 Halls Road, 860-434-1646 • Old Saybrook, 155 Main Street, 860-388-3543
Call Toll-Free: 877-377-3922 • www.essexsavings.com

Member FDIC

Equal Housing Lender